



NO ONE DELIVERS MORE.

ALERT!

Published quarterly by Gardiner Security

Units 25-27 Transpennine Trading Estate Rochdale Lancashire OL11 2PX Telephone: 01706 343343 Editor: Kimberly Whitehead Email: kwhitehead@gardinersecurity.co.uk www.gardinersecurity.co.uk

All prices correct at time of going to print. Gardiner Security cannot be held liable for any errors or omissions.



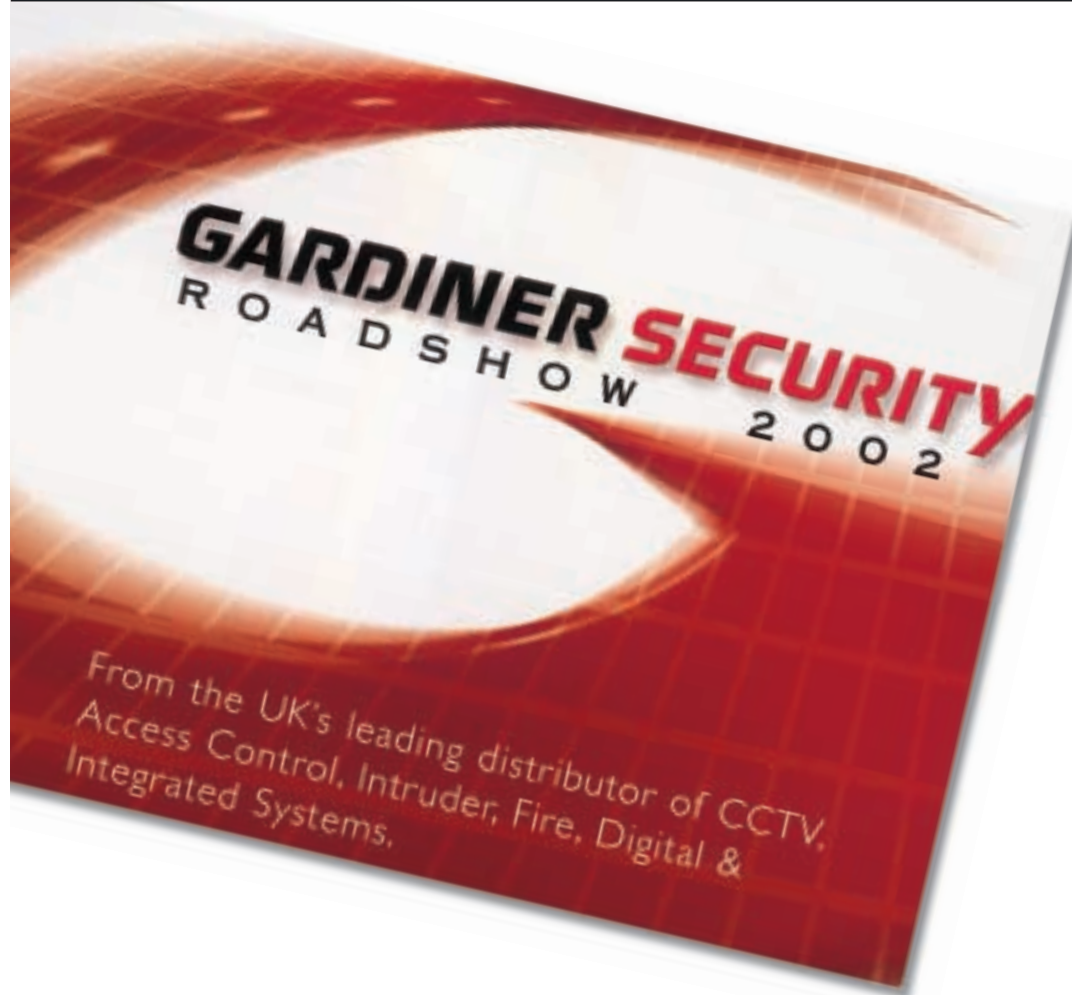
www.gardinersecurity.co.uk

ISSUE THIRTEEN SEPTEMBER 2002

ALERT!

NEWSLETTER

THE FULL STORY ON SECURITY



Gardiner Roadshow widens the net.

Gardiner Security, the UK's leading distributor of security equipment is holding a series of six roadshows during September which will bring the latest products and technology from all 5 product divisions to nationwide attention - and right on the doorstep of security managers and installers everywhere.

Running over a period of three weeks from 10 to 27 September 2002, each show will give visitors the chance to see the best on offer from leading manufacturers such as

- Bell Systems
- PAC International
- Urmet Domus
- Dedicated Micros
- Sanyo
- Ikegami
- Dennard
- Sony
- Morley Electronic Fire & Security
- Petards
- Coopers
- Elmdene
- Optex
- Pyronix
- ADE
- Axis
- Philips

The Gardiner Security shows will cover all the latest products and systems of interest to the industry - CCTV, Intruder, Access Control and Fire, plus Public Address Systems and Systems Integration. With the recent innovations in the security industry, Gardiner Security has decided to work with a number of key manufacturers to bring you the latest product launches and developments with a focus on digital and systems integration.

For the show nearest you, see below:
Scotland, Glasgow.
Holiday Inn City West. 10th September
North West, Manchester.
Radisson SAS. 12th September
Midlands, Birmingham.
Ramada Penns Hall. 17th September
North East, Leeds/Bradford.
Courtyard Marriott. 19th September
South East, Croydon.
Hilton. 25th September
South West, Bristol.
Holiday Inn. 27th September

Each show will run from 10.30 am - 6.00 pm. For further information, or to book your free ticket, email roadshow@gardinersecurity.co.uk with your full details.



INTEGRATED SYSTEMS DIVISION

IP SOLUTIONS FROM PETARDS

Enhanced video and image processing software

Following the merger of Pentyre Ltd with Petards Vision earlier this year, further enhancements have been made to their video processing and image storage software, Advantage.IP (formerly known as Argus-IP).

Petards believe that IP solutions not only apply to the security world but also to an organisation's management team. With the functionality of Advantage.IP, a whole new area of information can be gathered, from security through to marketing and strategic planning of the business. This can help in the cost justification of enhanced security systems.

Petards acknowledge that Analogue systems remain effective in the market place (for sites that have less than 25 cameras, or a company with one monitoring location using basic CCTV). However IP Solutions bring a commercial attraction in meeting the requirements of customers across all sectors of industries, or with companies that are able to accommodate growth over several years.

Advantage.IP solutions enable IP video cameras or Analogue cameras linked to IP servers to automatically or manually capture, retrieve and playback digital images in configurations of 4, 9 or 14 fixed or PTZ cameras, up to an unlimited number of cameras. Advantage.IP uses state-of-the-art video processing functionality to make this a quick and simple process.



IS THE MODERN HOME READY FOR THE MODERN FAMILY?

Lovell Homes with all Modern Comms

Lovell Homes are currently in the final stages of the development of 12 new homes at Silkstone Common, Barnsley. Every one of these new homes incorporates an Ortronics In-House system, installed by Lambda Technologies Ltd of Leeds who have wired up each home to provide an average of 40 data outlets, 8 TV outlets, CCTV facilities at the front and rear, wall or ceiling speakers in every room and sufficient integral wiring to cope with all immediate and long-term future needs.

The In-House system uses a central Control Cabinet, that can be located anywhere in the house; as the hub of the communication system which can provide links to the audio, voice, data or video systems.

The flexibility in lifestyle that an In-House system can bring is almost unbelievable – the full range of computer, telephone and television services accessible in every room, the ability to see what your security or baby-monitoring cameras are seeing whenever you want and where ever you are, internal computer networking, and a lot more. For the home office, the benefits are even greater. The Ortronics system allows you to work wherever you want in the building, with immediate and uninterrupted communication facilities with full and instant access to your computer and all external communication systems. Even if primarily not used for work, the In-House system is perfect for today's modern family as it keeps pace with the benefits that technology can bring to their home – no matter how big or small.

MAKING A DIFFERENCE

Important benefits from Visonic

On your next residential quotation, what will single out your business and make you the preferred choice and win you that order. Will it be price, quality, performance and not forgetting reliability? Whilst, important perhaps there is a need to produce more in the way of valuable features that really will make a difference. What about adding to the list:

- Speech Prompting for easy use
- Child Monitoring by the customers mobile phone
- Home Automation using existing mains wiring
- Message Centre for leaving messages for the family
- Text Messaging
- Fast efficient installation with no wires

These are just a few of the features and benefits on offer from Powermax, Visonic's wireless Home Security and Automation System. Want to know more? Then visit your local Gardiner Security branch or contact Visonic on 0870 7300815 or visit our web site www.visonic.com.



STRUCTURED CABLING

A Range of products to suit your CCTV and network needs

Within the new "Integrated Systems Division" we offer a range of structured cabling products to not only support the Network Solutions area of the business, but to offer a range of high quality products from market leading manufacturers, ideally suited for the growing Access Control and CCTV market.

Cat5e cables to meet the growing trend of transmitting video signals up to 1,500m.

Pre-Terminated Fibre Optic cables the ideal solution for the security installer with little or no fibre optic cable experience. Simply specify the type of connector (ST or SC) the number of fibres (4,8 or 12) and the cable length and we will dispatch within 5 working days. Takes all the mystery out of fibre optics – you are simply installing another cable.

19" Rack Freestanding or Wall Mounted Cabinets offer the ideal solution for the containment of all your CCTV control equipment whether it is a simple VCR with tape storage, Multiplexer or a total control system with keyboard. We have a large range of cabinets from 6U wall mounted up to 54U Freestanding all complete with lockable glass doors. (Note 1U is 45mm) With a range of 13a socket power rails, static and telescopic shelves and even fans. We have a solution for all your cabinet needs.





FIRE DIVISION

LPCB APPROVAL FOR C-TEC'S EN54-2.4

CFP conventional fire alarm panel

C-TECS CFP conventional fire panel has been tested and approved as meeting EN54 Parts 2 and 4 by the Loss Prevention Certification Board (LPCB).

To achieve this accreditation the panel was submitted to extensive testing by the Loss Prevention Council to verify it met all of the relevant EN54 clauses concerning functionality and performance.

The successful conclusion of these tests has resulted in three LPCB approved fire panels being added to C-TECs portfolio a two, a four and an eight zone version. All three are now available ex-stock with the following user and installer friendly features:-

- Class change and alert inputs
- Auxiliary fault, reset, remote and auxiliary fire outputs
- Four conventional sounder circuits
- Programmable delay, zone test and comprehensive fault diagnostic features
- Push button access code entry to access levels 2 and 3
- An attractive flush or surface mountable plastic lid and enclosure

For over 150 years, the LPCB and its predecessor, the FOC (Fire Officers Council), have been working with suppliers, specifiers, regulators and insurers to set the standards necessary to ensure that fire and security products are fit for their intended purpose. In addition to the successful accreditation of C-TECs CFP fire panel, the company's ISO9001 quality accreditation system has been accredited by the LPCB since 1984



12V DETECTOR RANGE FROM A2Z

Range of detectors

The complete range of 12 volt smoke, heat and carbon monoxide gas detectors for the security industry

- Direct connection to most security panels
- Fully interchangeable using common base
- Easy to service, plug-in and twist assembly
- Low current, 4 wire, 12 volt DC operation
- Latching or auto-reset (selectable)
- Test button
- Detector and base in white polycarbonate
- Manufactured in Great Britain



ROADSHOW 2002

Morley IAS Fire & Security are one of 16 manufacturers set to exhibit at this year's road show (see front page story).

Morley will be exhibiting their new ZX Series of Multi-protocol Fire Alarm Control Panels. Why not take this opportunity to speak with the manufacturer direct, and receive a demonstration of the new range?

To receive your free invitation email: roadshow@gardinersecurity.co.uk



SAFETY TECHNOLOGY INTERNATIONAL PROTECTION DEVICES

Stopper

- Anti vandal construction from tough clear polycarbonate
- Simple four screw retro fit wire free installation
- Break seal or lock security facility
- Various spacers to accommodate surface installations
- Optional 120 dB battery powered sounder
- Available in a range of colours for different applications



Exit Stopper

- Self-contained electronic door alarm
- Highly versatile for almost any type of door, mounting or installation including remote placement of sounder
- Sounds a powerful 85/120 dB warning alarm when activated
- 32 user programmable features
- Virtually indestructible polycarbonate
- Housing available in red or green
- Fitted with a 9V PP3 alkaline battery (included)
- Key operated override facility available



Steel Web Stopper

- Durable web design uses plastic coated 9 gauge steel wire
- Supplied with installation kits
- Optional tamper resistant fixings
- Fast, easy installation
- Seven models available to fit virtually all flush or surface smoke detectors
- Stainless Steel version available in three sizes
- Lifetime guarantee against breakage in normal use



Extinguisher Stopper

- Virtually indestructible polycarbonate housing
- Highly visible 'stop sign' design discourages wrongful use of extinguisher
- Compact design mounts easily next to the extinguisher
- Sounds a powerful 120 dB warning alarm when activate
- Self contained 9 VDC alkaline power source is provided





ACCESS CONTROL DIVISION

AIPHONE 4 COMMON WIRE GF DIGITAL VIDEO

Apartment Intercom

The Aiphone GF Common-wired system has been enhanced with video door entry and a digital directory for the tenants in the building. Visitors can easily find the name of the person they wish to call and the resident can see and talk to the visitor before opening the door.

This new breakthrough intercom system provides advanced features and expanded capacity for video entry security in apartment or multi-tenant buildings and all on only four common wires.

New features include finding the resident's name and apartment number with the "Digital Name Scrolling Module" by simply pressing the first letters of their name. The video system enables residents to view and speak with visitors from inside their homes then unlock the door to let them in.

This is an ideal communication and access control system that adds security and convenience to the tenants in an apartment or office building. In addition, with simple common wiring, the installation is simplified greatly, which reduces the overall cost of the system, making it perfect for new and retrofit applications.



PAC LAUNCHES PAC EASINET

New network access control system

PAC EasiNet is a brand new network access control solution from PAC International based around its new PAC 200 series of next generation door controllers. Using the very latest technology including 32-bit Microsoft software and fast communications, the sophisticated PC-based system is incredibly quick and easy to install, commission and operate.

Offering maximum flexibility for the installer and end user, it can be economically expanded door-by-door using the building block of PAC's new low-cost PAC 202 Two-Door Access Point Controller. Upgrading is also cost effective and simple without the need to invest in new hardware as software and firmware (updates for the door controller) can be automatically downloaded from PAC's website.

Rich in functions and features the PAC EasiNet software facilitates the management of large numbers of electronic keys with a host of functions offering far more flexibility than ever before. The intuitive user interface provides a tailored interface for the different requirements of installers, operators and supervisors.

For the installer, features such as One-Touch Testing, Plug and Play Networking and DIN Rail Mounting ensure installation and commissioning is convenient and straightforward.

The software will also be released in 32, 64 and 128 door versions providing a fully integrated access control solution for up to 20,000 users.



AWARENESS TO OUR CARE PRODUCTS

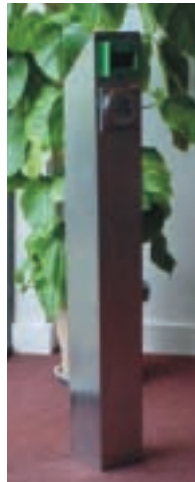
Products for the disabled market

Over the past 20 years we have seen Access Control become a big part of everybody's life. From small Entry Systems to large Computer based systems, there seems to be something to suite every application. Unfortunately European Law does not think so, with the Disability Discrimination Act part III, which will be in force by 2004 will not allow Access Control products to be fitted unless it can accommodate people with disabilities. For example, an Exit Button that cannot be pressed by a person who has not got the ability to hit a specific target area, will not comply, and therefore will have to be changed for a suitable device which in-turn costs people time and money.

C.D.V. (UK) has the ability to offer a vast range of products specifically for the Disabled market, ranging from Touch Sensitive Exit Devices, to Radio Controls and Door Operators. As C.D.V. (UK) is a manufacturer, we have the resources to adapt existing products to suite customer's individual needs.

We recently had a request for a Disabled toilet door Interlock, which consisted of a C.D.V. Logic based controller. We supplied the Sprint Door Operator, with two Touch Sensitive Controllers that locked and un-locked the door without the need to apply pressure to a switch or thumb turn lock. We even incorporated a feature that could interface into a Nurse Call and Fire Alarm system, allowing the user to feel completely independent, but knowing that help was a few minutes away.

At C.D.V. (UK) we will always listen to an individual's request, and endeavour to provide a solution.



New from PAC The PAC EasiNet



We are pleased to introduce the next generation of access control - PAC EasiNet Access Control PC Administration Software. This is the first level of our new family of organic access control solutions that will truly grow with your business.

PAC EasiNet is a flexible innovative PC based Access Control solution that offers ease of use,

simplicity of installation, and true scalability. PAC EasiNet is designed to be used with the new 200 series Access Point Controllers, giving sophisticated, simple access control for up to 128 doors.

The system offers a number of enhancements over PAC's other product ranges which makes it particularly suitable for small and medium sized systems.

With PAC it has never been easier to secure the buildings of the future, today, with the designs of tomorrow. For easy to use, innovative solutions from the leader in system design, call Gardiners friendly and helpful customer service team for an information pack.

- Next generation... low cost networkable system
- Access control for up to 128 doors
- 32 door software - FREE
- Up to 20,000 users
- Plug and play networking
- Downloadable firmware
- Uses RS485 technology
- Supports a full range of reading technologies



INTRUDER DIVISION

CHEQUE IT OUT!

Infra-red detection equipment from Optex

Optex, the worlds' largest manufacturer of infrared detection equipment, have combined with GSL to introduce the Optex/GSL 'Cheque it out' campaign. This scheme is designed to introduce new and existing installers to the full range of motion detection, image capture and external detection devices available from Optex.

The scheme centres around a cheque book containing entitlements to discounts across the entire range of Optex products. The cheque book is available from your Optex Regional Sales Manager and contains almost £300 worth of savings against specified Optex products. Your local GSL branch will exchange the cheques for savings against the featured products.

For instance, if you want to try one (or more) of the amazing Optex MX dual technology sensors, simply take the cheque book to your GSL branch, fill-in the MX cheque and a discounted invoice will be issued there and then. There is no need to send the voucher away to be processed; the discount is available to you straight away.

If you are interested in obtaining more information on the scheme your local GSL branch can arrange for an appointment with Optex or telephone 0208 254 2222 to contact Optex directly, who will put you in contact with your Optex representative. You will then be issued with your cheques and be briefed on how to use them. The scheme runs until the end of 2002 so don't delay if you want to make the most of this great offer.



WHAT ARE THE IMPLICATIONS FOR YOU OF THE DD 243:2002 FROM BSI?

The document is a code of practice relating to the installation and configuration of intruder alarms.

In plain English the document is a set of guidelines which is aimed at reducing the number of unnecessary police call outs. The code of practice has been initiated by ACPO due to the waste of police resources created due to these false alarm occurrences.

The specific area of the draft covered here relates to reducing the instances of alarm event being triggered by users not remembering their codes or miskeying them. The likelihood of false alarms should be minimised by using a secure and simple method of setting and disarming the system.

There are now a number of options allowed for by the directive for setting and unsetting the alarm system, but most importantly, **the use of a PIN on a keypad is no longer permitted under the new arrangements.**

Instead, the standard makes recommendations of other means of setting and unsetting, including:

- shunt locks (where the setting switch is inside the lock case),
- radio keyfobs (the button operated devices now commonly used to unlock cars)
- proximity devices

The regulations are strict about the type of button operated radio keyfobs that may be used - if their range is greater than 1m, their signal must be of the rolling code type, and they must deal properly with low battery conditions.

Shunt locks of the appropriate level of security are expensive and are relatively hard to install.

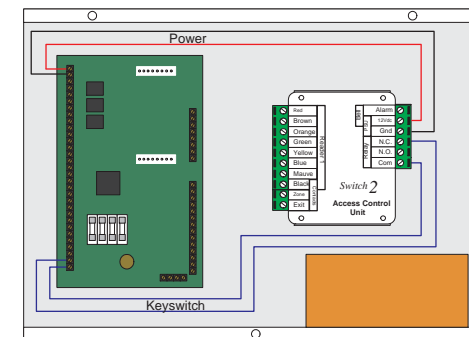


OUR PROXIMITY SOLUTION

Proximity systems as supplied by Paxton Access are cost effective and meet the criteria perfectly. The card or keyfob has effectively 100 million 'differ's, one hundred times higher than the level required by the standard (a normal cylinder operated keyswitch may only offer 30,000 'differ's). No batteries are required, so system reliability is very high and complexity is reduced.

A common task for the installer will be the retrofitting of alternative reader to the existing keypad in an installation where the client wishes to regain 'callout' status with their local police force.

We recommend a PROXIMITY reader and a Switch2 control unit. The Switch2 control unit is small enough to be mounted inside the alarm panel. This is good because the contacts are then covered by the alarm's tamper protection and the Switch2 control unit can be powered by the panel's 12v supply (200mA max required).



For additional convenience, a second Switch2 system may be used to allow access to the front door. The keyholder can then use the same token to access the building and disarm the alarm.

The simplest configuration is effected by connecting Switch2's relay contacts to the keyswitch inputs of the alarm panel. The alarm should be configured to 'momentary' operation (check that your alarm panel offers this).

If a token is lost or an employee leaves without handing it in the missing token is simple barred from the system.

For more complex solutions - multi point setting and unsetting, or entry point setting and unsetting, contact the Paxton Access technical helpline.



CCTV DIVISION

SILENT WITNESS

World's first modular CCTV camera system

Silent Witness announces the world's first modular CCTV camera system. With 13 housings, 10 camera boards and 9 lenses, this unique system allows for the choice of over 1100 camera combinations at the point-of-purchase. In three easy steps, the preferred combination of housing, camera board and lens can be built. Each component is packaged separately to allow camera users the flexibility to purchase, assemble and upgrade their camera as needed.

Both the Silent Witness MagnaView and PrimaView dome camera lines have been designed for the modular camera system. MagnaView (V28Round, V28Square, V28Cornermount) is Silent Witness' premium line of tough, vandal resistant cameras. They are ideal for rugged environments such as prisons and correctional facilities. PrimaView (C12 surface to flush mount, V29Angledome, C14 flush mount) is the value camera line that offers strong, lightweight surveillance solutions for retail, banking, commercial buildings, hotels and schools.

Both the MagnaView and PrimaView camera assemblies are easy to install and remove. The housing can quickly be installed and wired before the gimbal, camera board and lens are snapped in. All

modular cameras are available with the full range of Silent Witness Quick Change Lenses from 2.9mm to 16.0mm and with a wide-range of camera boards, including EXview HADTM. The varifocal auto iris lens (2.6-5.6mm or 4.0-8.0mm) is available for all models except the PrimaView C12.



DEDICATED MICROS' D4

Ideal system for small businesses

Dedicated Micros had combined and enhanced the entry level Digital 4 and Digital 4e range; to produce a new compact silver and chrome unit, that offers the choice of PPP or Ethernet remote viewing.

With a live quad display, the D4 allows 24-hour simultaneous recording, live quad display, and DM's trade mark user friendly interface to keep installation and operator training to a minimum.

In addition Dedicated Micros is revolutionising site maintenance with new network remote support software. It is now possible for the installer to connect the Digital4 in a password protected admin mode that allows direct access to menus. System adjustments can then be made remotely or over the network - without the need for a site visit.

A new infrared remote control is included as standard and provides the operator with front panel control of the unit including the ability to change cameras and camera views, the option to play back images from the hard disk, search using the GOTO function and review of the event list.

Other features include a familiar front panel control, activity detection, email on alarm, network viewing capability and the ability to archive to an external device, such as CD-R.

Pauline Norstrom, Marketing Communications Manager at DM commented: "Smaller applications can now benefit from remote monitoring at an entry level price, along with high-end capabilities".



IKEGAMI

Monochrome video monitor (PM-K Series)

The PM-K5(5-inch), PM-K9(9-inch), PM-K12(12-inch) and PM-K17(17-inch) are high quality and high performance monochrome picture monitors designed for video applications that require faithful video reproduction.

The PM-K Series are high quality picture monitors that deliver vivid high resolution video of 700TVL (PM-K5/K9), 750TVL (PM-K12), 900TVL (PM-K17) or more.

The monitors use high-reliability silicon transistors and ICs thus providing circuit stability ensuring consistently high picture quality even if there are variations in power supply and temperature.

DC regulation and ABL circuitry cover shadows to highlighted areas of the scene, to stabilize brightness.

Video output terminal and 75ohm auto termination allows the bridge connection to be made easily. It permits several monitors to be connected together to implement a surveillance system.

Switching regulator power supply and AC socket not only reduces power consumption and weight, but covers worldwide voltage. Various AC plug cables are available.

The cabinet's solid metal construction greatly reduces both interferences to and from neighbouring devices.

External sync input and underscan is available as factory option.

